



EUCON™ Application Setup

How to configure WControl and EuControl Software to use Avid media controllers with applications from Avid® and our EUCON Development Partners

Introduction

Overview of Avid Media Controllers ..



Avid
Pro Tools



Avid
Media
Composer

MTRX

DADman
for
Pro Tools | MTRX



Audition
and
Premiere ..



Ableton
Live ..



Apple
Logic Pro X

// **MAGIX**

Samplitude Pro
and
Sequoia



Merging
Technologies
Pyramix



MOTU
Digital
Performer

 **steinberg**

Nuendo
and
Cubase



Introduction

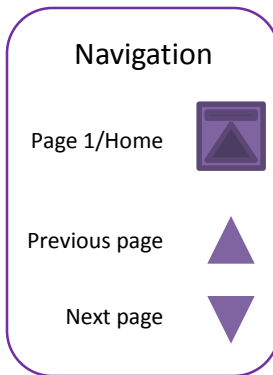
This guide shows you how to set up EUCON WControl software for Avid S4 and S6, and EuControl software to use the Avid S1, S3, Dock, Control app, and Artist Series controllers with applications from Avid and many of our EUCON Development Partners.

How to Use this Guide

1. Activate your Avid product, download and install WControl and/or EuControl software and connect your Avid media controller by following the instructions in the guide for your controller (such as the *Avid S4/S6 Guide.pdf*, or *Avid Control Guide.pdf*).
 - Download the latest version of EUCON software from your [Avid Account](#) (EuControl Software for S1, S3, Dock, and the Control app, or MasterModule Software for S4/S6), or visit <http://euphonix.avid.com/main.php> (for Artist Series).
 - EUCON software and documentation for your controllers become available in your account after you activate your purchase.
2. Follow links on [page 1/Home](#) for the application you want to control, then follow the corresponding instructions to configure EUCON communication.

Videos

Check out the [Get Started Fast with Pro Tools S3, Dock, and Control](#) videos on YouTube for tutorials, tips and tricks on activation, setup, Layouts, Soft Keys, and more.



Using Avid Media Controllers with EUCON Development Partner Applications

For S1, S3, Dock, and Control app operational examples and workflows, see the *Using EuControl Surfaces.pdf*. The Pro Tools instructions in this guide are applicable to many other EUCON applications due to the universally applicable commands in the EUCON communication protocol. For Avid S4 or S6, see the *Avid S4/S6 Guide.pdf*.

For information specific to EUCON Development Partner applications (such as Adobe Premiere Pro and Audition, Apple Logic Pro X and Steinberg Cubase/Nuendo) see the documentation provided by the manufacturer. Always check with the manufacturer of your specific application for the most recent software, requirements, and instructions.

Also, just because an application is not listed in this guide does not necessarily mean it is incompatible with EUCON. Check with the manufacturer. For links to EUCON Development Partner sites, visit:

http://avid.force.com/pkb/articles/how_to/EUCON-Application-Setup



Overview of Avid Media Controllers

Avid Pro Mixing devices include the Avid S6 and Avid S4.

Avid S6



[Avid S4/S6 Support](#)

Avid S4



[Avid S4/S6 Support](#)

EuControl devices include the Avid Control app, S1, Dock, and S3.



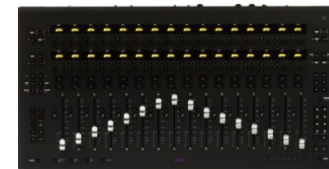
[Avid Control Support and Compatibility](#)



[Avid S1 Support and Compatibility](#)



[Dock Support and Compatibility](#)



[S3 Support and Compatibility](#)

Legacy EuControl devices include the Artist series controllers (Artist Control, Artist Mix, Artist Transport and Artist Color).



Artist Control



Artist Mix



Artist Transport



Artist Color

[Artist Series and EuControl Compatibility](#)

Though no longer manufactured, legacy EuControl remain compatible with current EuControl software (not all features are supported).



Using Multiple Avid Media Controllers

Avid media controllers can be combined to form larger, unified systems.



Example Pro Mixing Configurations



Avid S6 M40 48-9D with 1x Control app



Avid S4 4_16 with 1x Control app



Example EuControl Media Controller Configurations

1x Control app



1x Control app + 1x S1



Up to 4x S1s with up to 4x Control apps



Up to 4x S1s with up to 4x Control apps
+ 1x Dock/Control app



- 1x Control app + 1x Dock + S3



- 1x Control app + 1x Artist Transport + 1x S3



Note:

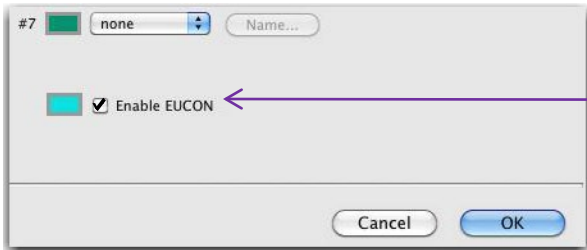
- Multiple Avid Control apps require multiple Avid S1s.
- Avid Dock is not supported in combination with either an Artist Control or an Artist Transport.
- Avid S1 is not supported with Avid S3.



Pro Tools® and Pro Tools | Ultimate are fully EUCON-aware.

To enable EUCON in Pro Tools:

1. Make sure you have activated your product, downloaded and installed EuControl software and connected your Avid media controller by following the instructions in the guide for your controller (such as the *Pro Tools | S3 Guide.pdf*).
2. Launch Pro Tools, choose Setup > Peripherals, and click to go to the Ethernet Controllers tab.
3. Click to select Enable EUCON.



4. Click OK.

Pro Tools scans your system until it identifies attached EUCON-compatible hardware. When Pro Tools finishes scanning your system, your controllers are ready to use with Pro Tools.

To confirm installation and communication:

1. Make sure you have enabled EUCON as explained above.
2. Open a session if one is not already open and verify the Mix window displays a blue-green border around Pro Tools tracks that are currently banked to your controller.



4. Verify that the displays on your controllers show track names, location, or other session data, depending on the unit.

Other Units

When EUCON is enabled in Pro Tools, the use of additional control surfaces is subject to the following conditions:

- You can use the Surround Panner Option, as well as one USB/MIDI-based control surface at the same time as EUCON. A MIDI control surface will mirror the first eight channels on your EUCON devices.
- You cannot use another Ethernet-based unit (such as Avid S4/S6 control surfaces) at the same time as any EuControl hardware control surface. You can use 1x Avid Control app simultaneously with S4/S6.
- EUCON (for S4/S6) and EuControl software 3.5 and later can be installed on the same workstation, but only one can be used at the same time.

For operational information and examples, see the *Using EuControl Surfaces.pdf*.

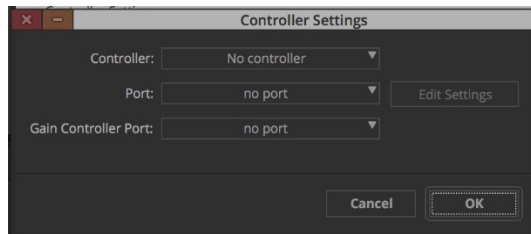




The Controller Settings dialog lets you configure your Avid editing application to communicate with Avid media controllers. The following section shows how to enable EUCON in Media Composer and provides a few example tasks. For additional examples, see the EUCON sections of Media Composer Help.

To configure your Avid editing application for an Avid media controller:

1. Make sure you have installed EuControl and successfully connected your controllers.
2. Choose File > Settings, then select the User tab in the Settings window.
3. Double-click “Controller Settings” in the Settings list. The Controller Settings dialog appears.



3. Select Controller > EUCON Controller.
4. Click OK.

Controller Mappings

When EuControl Settings opens for the first time, it includes a set of default Avid editing functions mapped to the Avid media controller buttons (the default mappings are called the Application Set or “appset”).

The Soft Keys tab lets you edit and customize Surface, Wheel, and Touchscreen soft key assignments. With controllers that include a Touchscreen, you can access the Surface soft keys with the circular buttons below the Touchscreen (such on the Dock or Avid Control).

You can use your Avid media controller to perform some of the basic editing functions available in your Avid editing application. These functions let you edit and trim clips in your sequences using the controller rather than the buttons and tools in Media Composer. For example, you can use the Dock’s Jog wheel to navigate to a transition in the Timeline, use the Soft Key functions to activate Trim mode, and then perform a single- or dual-roller trim.

Some editing commands only apply to specific windows in your Avid editing application. You might need to click the appropriate window — for example, the Timeline — before you can perform a specific function.

Some editing functions are mapped to your controller by default. If you want to access other editing functions, you can customize the controls by mapping other functions to the soft keys or Touchscreen on your controller.

For operational information and examples, see the EUCON sections available in Media Composer Help.





DADman for Avid Pro Tools | MTRX™

Setup



Take remote control of sources and monitoring with EUCON

With the included DADman software, you can remotely control up to 48 mic pres and all monitoring directly from Pro Tools | Ultimate, Avid S4, Avid S6, and other EUCON-enabled control surfaces. Pro Tools | MTRX also includes sophisticated software that puts complete monitoring, talkback, summing, and fold-down control at your fingertips, whether you're mixing in stereo, surround, or Dolby Atmos immersive audio.

To configure your MTRX for EUCON and an Avid media controller:

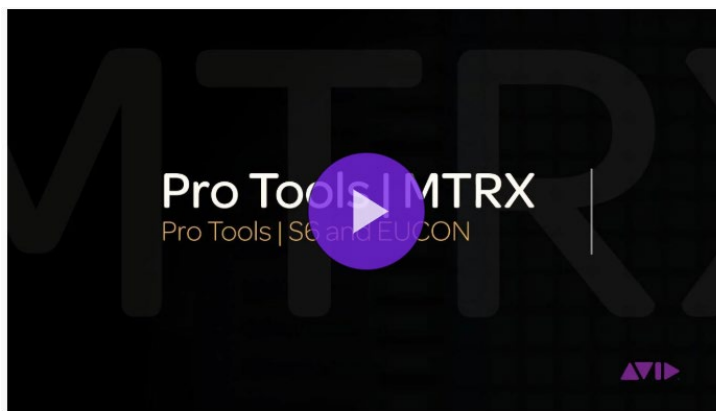
1. Make sure you have installed EuControl and successfully connected your controllers.
2. Refer to the following articles on our Knowledge Base:
 - <http://avid.force.com/pkb/articles/faq/Pro-Tools-MTRX-Support>
 - [Creating a New Profile for Pro Tools MTRX](#)
 - [Avid Dock Monitoring with Pro Tools MTRX](#)

To see MTRX in action watch the videos available here:

<https://www.avid.com/products/pro-tools-mtrx/for-music>

And on YouTube:

<https://youtu.be/DVf5vyMozCE>



Pro Tools | MTRX - Pro Tools | S6 and EUCON





Avid media controllers use EUCON-to-Mackie Control conversion software along with a special EuCon MIDI Driver to communicate with Adobe applications including Audition and Premiere via internal MIDI ports. To control Adobe Audition or other EUCON-aware Adobe applications such as Premiere with your Avid media controller you must first configure EuControl for MackieControl, then configure corresponding settings within your Adobe application.

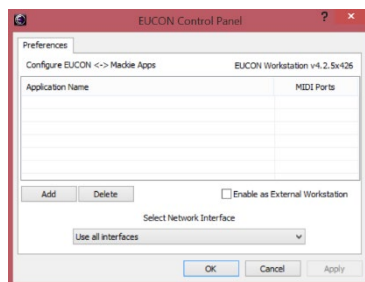
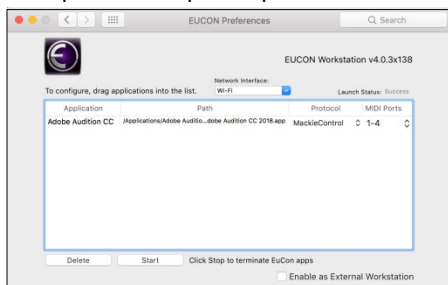
Setting Up EUCON for MackieControl

Before proceeding, make sure you have activated your product, downloaded and installed EuControl software and connected your Avid media controller by following the instructions in the guide for your controller (such as the *Pro Tools | S3 Guide.pdf*).

To add an application to EUCON Preferences:

1. Open System Preferences (Mac) or Control Panel (Windows) and do the following:
 - **Mac** Double-click the EUCON icon in the Other section at the bottom of the window.
 - **Windows** Click the EUCON icon.

The EUCON preference pane opens.



EUCON Preferences pane on Mac (left) and Windows (right)

2. Do the following as appropriate for your DAW platform:

- Mac**
- Locate the application you want to control in the Finder.
 - Drag and drop the Adobe Audition application icon into the middle of the Preferences pane. Its name and location appear in the Application and Path columns, respectively.
 - Click in the Protocol column and select “Mackie Control.”

Windows

- Choose Start > Control Panel, open EUCON preferences and then click Add.
- Navigate to your application (such as Adobe Audition) and select it.
- MackieControl is automatically chosen as the protocol (though no longer shown as it was in previous versions of EuControl)

The selected application appears in the EUCON preferences list, with four MIDI Ports (1–4). One MIDI port is required per 8 physical faders.

3. Click OK to close the EUCON Control Panel.
4. Close the EUCON Preference pane and reboot your computer if prompted to do so.

More than one application can be controlled using MackieControl by dragging multiple application icons into the EUCON Preference pane. Make sure each application has it's own unique set of MIDI ports (repeat step 2, above, to add other applications and add an additional set of MIDI Ports 5–8).



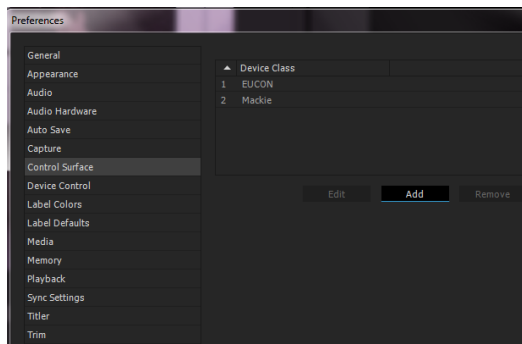
Configuring Adobe Audition or Premiere for MackieControl

Before proceeding, you must already have completed the steps described on the previous page in [Setting up EUCON for MackieControl](#).



To configure EUCON in Adobe applications:

1. Make sure EuControl is installed and your controllers are connected and attached in the Surfaces tab of EuControl Settings.
2. Do the following:
 - Launch Audition, open or create a Multitrack session, then from the Adobe Audition CC menu choose > Preferences > Control Surface.
 - or-
 - Launch Premiere, then from the Edit menu choose Preferences > Control Surface.
3. In the Control Surface Preferences window click Add.
4. In the Add Control Surface dialog, click the Device Class selector and choose EUCON.



6. Click OK to close the Add Control Surface dialog, then click OK to close the Preferences window.

In Adobe Premiere, test the controller by creating a new project:

1. Choose File > New Sequence...
2. Choose your sequence preset or enter in your own settings.
3. Choose Window > Timelines, and then choose the current timeline from the list.

The fader(s) on the controller should move to -0-

For more information visit [Adobe Support](#).





Avid media controllers use EUCON-to-Mackie Control conversion software along with a special EuCon MIDI Driver to communicate with Ableton® Live™ via internal MIDI ports. To control Live with your Avid media controller you must first configure EuControl for MackieControl, then configure corresponding settings within Live.



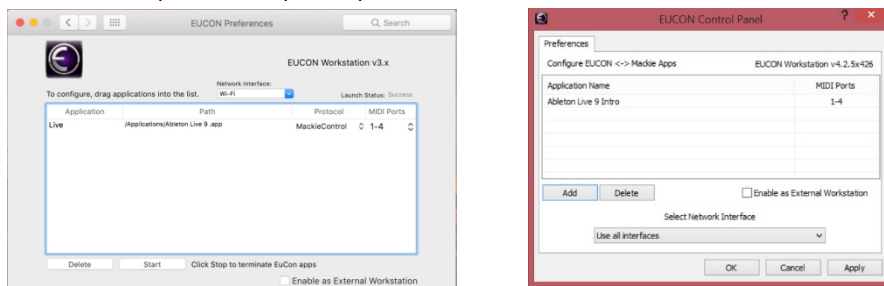
Setting Up EUCON for MackieControl

Before proceeding, make sure you have activated your product, downloaded and installed EuControl software and connected your Avid media controller by following the instructions in the guide for your controller (such as the *Pro Tools | S3 Guide.pdf*).

To add an application to EUCON Preferences:

1. Open System Preferences (Mac) or Control Panel (Windows) and do the following:
 - **Mac** Double-click the EUCON icon in the Other section at the bottom of the window.
 - **Windows** Click the EUCON icon.

The EUCON preference pane opens.



EUCON Preferences pane on Mac (left) and Windows (right)

2. Do the following as appropriate for your DAW platform:
 - Mac**
 - Locate the application you want to control in the Finder.
 - Drag and drop the Live application icon into the middle of the Preferences pane. Its name and location appear in the Application and Path columns, respectively.
 - Click in the Protocol column and select “Mackie Control.”
 - Windows**
 - Choose Start > Control Panel, open EUCON preferences and then click Add.
 - Navigate to your application (such as Ableton Live) and select it.
 - MackieControl is automatically chosen as the protocol (though no longer shown as it was in previous versions of EuControl)
- The selected application appears in the EUCON preferences list, with four MIDI Ports (1–4). One MIDI port is required per 8 physical faders.
3. Click OK to close the EUCON Control Panel.
 4. Close the EUCON Preference pane and reboot your computer if prompted to do so.

More than one application can be controlled using MackieControl by dragging multiple application icons into the EUCON Preference pane. Make sure each application has its own unique set of MIDI ports (repeat step 2, above, to add other applications and add an additional set of MIDI Ports 5–8).





Configuring Ableton Live for MackieControl

When setting up an application to be controlled by Mackie Control, use the MIDI ports of the EuCon MIDI Driver that were specified in the EUCON Preference pane (such as 1–4). Each port supports up to 8 faders, such as found on a single Avid S1. S3 (16 faders) will use two ports. Four S1s or Artist Mix units require all 4 ports.

Before proceeding, you must already have completed the steps described in [Setting Up EUCON for MackieControl](#).

To configure Ableton Live for MackieControl:

1. Choose Live > Preferences.
2. In the Preferences dialog, click the MIDI / Sync tab on the left, then do the following:
 - In the MIDI section, click the Control Surface column and choose “Mackie Control.”
 - From the Input and Output columns, select “Euphonix EuMidi1.”

These MIDI ports (In/Out 1) will carry communication to and from faders 1–8.

3. If your system has 8 or fewer faders on all Avid media controllers, close the Preferences dialog. You are ready to use your controller with Live.

4. If your system includes more than 8 faders, do the following:
 - In the next available row in the MIDI section, click the Control Surface column and choose “Mackie ControlXT.”
 - From the Input and Output columns, select “Euphonix EuMidi2.”
 - Repeat for each additional Avid media controller, selecting MackieControlXT and the next available Euphonix EuMidi Input and Output ports for each (such as EuMidi3).

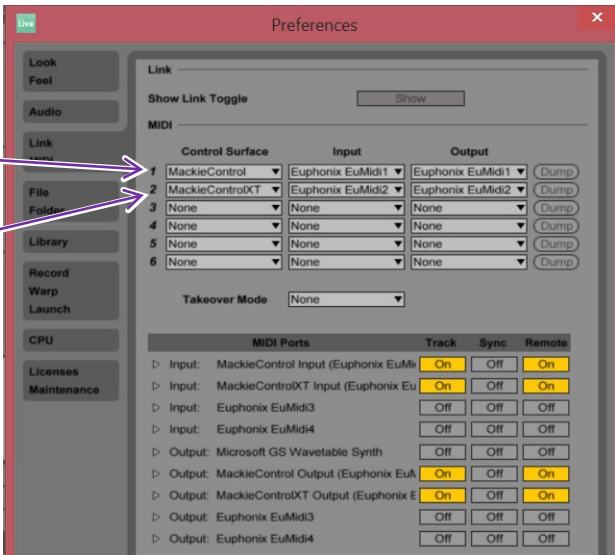
5. Close the Preferences dialog.

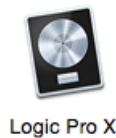
Your Avid media controller should now be controlling Live. If not, do the following:

- Make sure Live is the front-most application (the one receiving keystrokes and mouse clicks).
- Ensure all steps in this section have been set correctly, and reboot your computer.
- (Mac only) Make sure the Euphonix MIDI device in Applications > Utilities > Audio MIDI Setup is blue (active) and not gray (inactive). If inactive, select it, click Remove Device, and click Rescan MIDI.

MackieControl
(faders 1-8)

MackieControl XT
(faders 9-16)





Logic Pro X from Apple works with your Avid media controller with very little additional setup.

Always check with the manufacturer of your specific application for the most recent software, requirements, and instructions.

To make sure your controller works correctly with Logic Pro X:

1. In Logic Pro, choose Logic Pro X > Control Surfaces > Setup. The Logic Control Surface Setup window appears.
2. In Control Surface Group 1, locate “Channel Strip View Mode” and set this parameter to Arrange.



Optimizing the Wheel

Wheel modes and touch strip sensitivity can be optimized in Logic Pro X. By default, the wheel and touchstrip resolution can be too fast when scrolling and zooming horizontally and vertically, and be limited to a resolution of one bar (measure) when jogging or shuttling.

To optimize wheel resolution in Logic Pro X:

1. In Logic, choose Logic Pro X > Control Surfaces > Preferences.
2. Click Advanced (gear icon at top of Preferences).
3. Enable Control Surfaces then click on Control Surfaces (fader icon at top of Preferences).
4. Click to enable “Jog resolution depends on horizontal zoom.”

For more information see the [Logic Pro X and Control Surfaces](#) pages on the Apple web site.



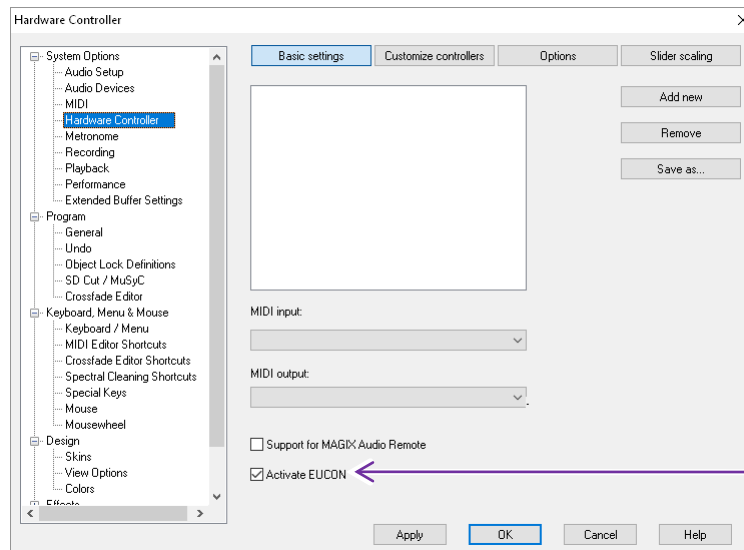
SAMPLITUDE PRO Sequoia

You can use Avid media controllers with Samplitude Pro X (version 12.0 or higher) and Sequoia (version 14 or higher) from Magix. Steps to enable EUCON are the same in both applications.

Always check with the manufacturer of your specific application for the most recent software, requirements, and instructions.

To setup and configure EUCON for Samplitude:

1. Launch Samplitude and open or create a new project.
2. Choose Options > System (Y).
3. Under System Options, click “Hardware Controller.”
4. In the EUCON section, click to enable Activate EuCon, then click OK.



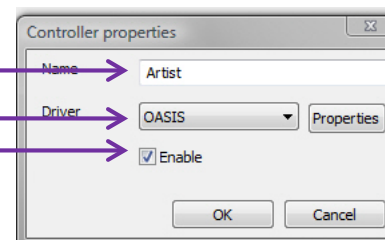


You can use Avid media controllers with Pyramix (version 7.0.9 SP1 or higher) from Merging Technologies.

Note: Demo versions of Pyramix (any version) do not support EUCON.

To enable Pyramix to work with Artist media controllers:

1. Be sure you have the required version of Pyramix software.
2. Choose Settings > All Settings, then find the “Remote Control” folder (near the bottom of the list).
3. Click “Controller.” The window is blank the first time you configure it.
4. Click “Add.” The Controller Properties window appears.
5. Type “Artist” into the Name field.
6. Click the Driver section pop-up menu and select the “OASIS” driver.
7. Make sure the Enable box is checked.
8. Click Properties. The OASIS controller asks you to select a transport.
9. Click OK.
10. In the Transport drop-down menu, click the down arrow to select “EuCon.”
11. Click OK to exit OASIS Configuration, then click OK in the Controller Properties dialogue box to exit.
12. In the Pyramix Settings window, click “Apply changes to Controller.”
13. Click OK to exit Pyramix Settings.
14. Save the current Project and exit Pyramix.
15. Restart EuControl, power cycle all Avid media controllers, then launch Pyramix.





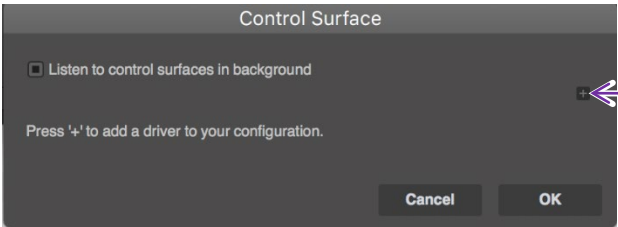
You can use Avid media controllers with Digital Performer (version 6.0.1 and higher) from MOTU. This section shows how to enable EuControl in Digital Performer.

Note: Download the latest version of Digital Performer from MOTU's web site. Digital Performer must be installed prior to installing EuControl. Always check with the manufacturer for the most recent software, requirements, and instructions.

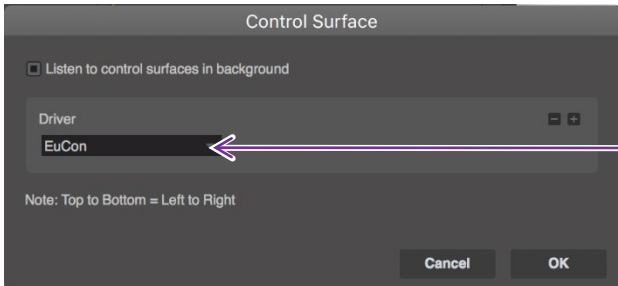
For Digital Performer to communicate with Avid media controllers, the EUCON driver must be added in the Control Surface dialog.

To enable EuControl in Digital Performer:

1. Open Digital Performer.
2. Choose Setup > Control Surface Setup. The Control Surface dialog opens.



3. Click the + button (add) on the right. A pull-down list with Drivers appears with EUCON at the top.
4. If EuCon is not already selected, choose it from the pull-down list.



5. Click OK.

Your Avid media controller now controls Digital Performer.

Reminder: A single EUCON driver will communicate with all of your media controllers, so do not add more than one.

For more information visit the support area of the Mark of the Unicorn web site: <http://motu.com/techsupport>





Steinberg's EUCON adapter enables fully integrated control of nearly all Nuendo and Cubase functions from Avid media controllers. Configuring EUCON is identical in Nuendo and Cubase.

Always check with the manufacturer of your application for the most recent software, requirements, and instructions.

Nuendo 7/Cubase 8 and higher automatically install the Steinberg EUCON adapter.

If you are using older versions of Nuendo or Cubase, you must install the EUCON adapter from Steinberg. In order to download the adapter, you must first have registered your copy of Nuendo and/or Cubase.

To install the EUCON adapter for Nuendo:

1. Create a user account in the MySteinberg area of the Steinberg web site if you have not already done so. If you already have a MySteinberg account and have already registered your version of Nuendo, continue with Step 2. To activate an account and register Nuendo, follow the on-screen instructions.
2. Log into your MySteinberg account if you have not already. Click on Activation & Reactivation, choose Euphonix Artist Series EuCon Adapter and select Permanent Activation.
3. Enter your Artist media controller's serial number. You will receive an email containing the activation code.
4. Launch the License Control Center (LCC) Software from the Applications folder, choose Wizards > License Download, enter your activation code and follow the instructions.
5. For Nuendo or Cubase to communicate with the Avid media controllers, their EUCON device must be added in the Device Setup.

To add the EUCON adapter to Device Setup:

1. Open Nuendo or Cubase.
2. Choose Devices > Device Setup. The Device Setup dialog opens.
3. Click the + button (add) on the top-left. A pop-up list of devices appears with EuCon near the top of the list.
4. Select EuCon from the list.

The EuCon device is added, the control surface immediately updates, the faders and knobs display track functions, and the EuCon Device Setup panel appears (see).

If the surface does not update and show tracks and functions, check the EUCON Preferences to see if you have enabled any other application for Mackie Control or HUI mode. If you see any applications listed in EUCON Preferences, delete them and try again.



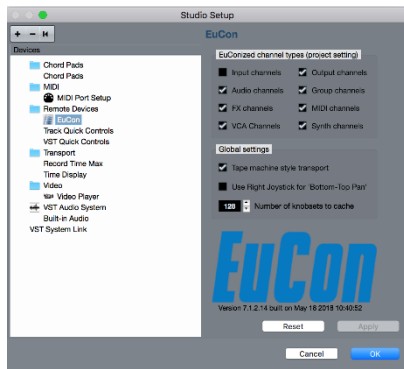


EuCon Device Setup

The EuCon Device Setup dialog lets you edit track assignment and transport control parameters in Nuendo and Cubase.

To open EuCon Device Setup if it is not already displayed:

1. In Nuendo or Cubase choose Studio > Studio Setup, then select EuCon from the Remote Devices folder in the Devices section.



EuConized Channel Types Determine which channel types appear on your control surface. If a certain channel is available and the corresponding checkbox is selected, that channel can be selected to appear on the surface. This channel is called *EuConized*.

All channels except Input channels are EuConized by default and can appear on the surface. This is useful to eliminate tracks from the surface, reduce memory usage, and reduce the time needed to build the EUCON mixer model when connecting, adding, or removing tracks from the project.

To enable/disable EuConized tracks, select the checkbox next to each type. Tracks without a checkmark do not appear on the surface. This setting applies only to the open project.

Global Settings The Global Settings section has two parameters: “Tape machine style transport” and “Number of knob sets to cache.”

Tape machine style transport

These transport modes affect the operation of the Stop, Fast Forward, and Rewind buttons in the following manner:

When Tape machine style transport is checked:

- **Stop** The control surface STOP button halts the transport and keeps the play head at the current position (even multiple presses), independent from Nuendo’s preferences.
- **Fast Forward/Rewind** The FF/RW buttons always latch independently of the control surface latch time preference. Repeatedly pressing the same FF/RW button has no effect. The current action can be stopped by pressing the opposite wind button, STOP, or PLAY. The FF/RW also stops if it reaches the beginning or end of the project.

When Tape machine style transport is not checked:

- **Stop** The control surface **STOP** button copies the Nuendo stop button.
- **Fast Forward/Rewind** The FF/RW buttons function as EuCon Momentary/Latch Switches. If the button is pressed and released quickly, the switches do NOT latch but behave momentarily, resembling the way these buttons work in the Nuendo GUI. If the Avid media controller’s FF/RW buttons are held down longer than the latch time set in the Preferences-Setup page, they latch.

Number of Knob Sets to Cache

Nuendo creates knob sets for EQ, Dynamic, Inserts, Aux sends and other functions. A certain number of these knob sets are kept, or cached, in RAM. For large projects on a large control surface, increasing the number of knob sets in the cache can access them faster but uses more RAM. It is rare to change this value.

